



# BISHOPS DOWN PRIMARY SCHOOL

Spring Term 3 Newsletter No 9  
www.bishopsdownprimary.org/  
29/01/16 Page 1 of 2

Dear Parents & Guardians,

Don't forget sign2sing day at Bishops Down is this Monday 1st February!

Children are welcome to bring in a suggested donation of £1 for the national charity SignHealth and wear a funky pair of bright, eye-catching gloves that will enhance their signing. There will be a prize for each key stage.

There will be badges for sale at break, children will sign for their lunch, a special assembly in the afternoon and a cake sale after school where everyone will have to sign for their cakes – don't worry the children will help you - we look forward to seeing you there!

Any cake/biscuit donations are gratefully received, please bring into school on Monday morning and leave in the library area, thank you in advance for your support.



Mrs Cockburn and the Makaton Masters

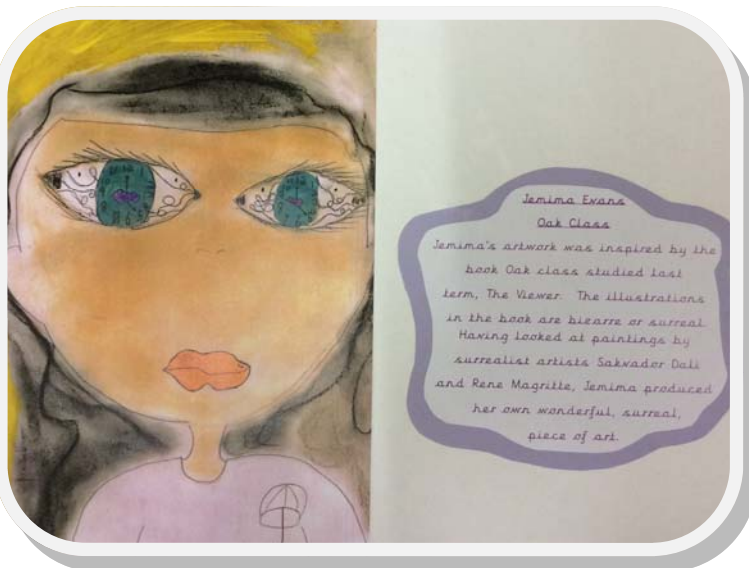
### Home School Agreements/Consultations

Please return home school agreements as soon as possible. Currently we have 32 out of 355! We will have paper copies available at consultations next week if you are unable to print them yourself. Please complete one per child.

Reports will be out today in readiness for the consultations next week. The reports are academic progress reports, there are no personalised comments at this point in the year. Of course next week during consultations, teachers will inform you of any behaviour or pastoral concerns, if they have them. In the Summer the end of year report will have progress **and** personalised comments.

Many parents have yet to sign up for an appointment, please sign up with the office. Next week we will be sending out a parent survey to gather your views on a number of issues so please look out for the parentmail next week with the link. Thank you.

*Clare*



	18.01.16 attendance	lates
Beech	95.9%	0
Apple	96.6%	1
Olive	92.4%	2
Maple	95.7%	6
Mulberry	94.6%	1
Hazel	91.3%	0
Sycamore	97.7%	0
Redwood	91.9%	2
Pine	95.9%	1
Oak	95.3%	2

### Reception Class plea

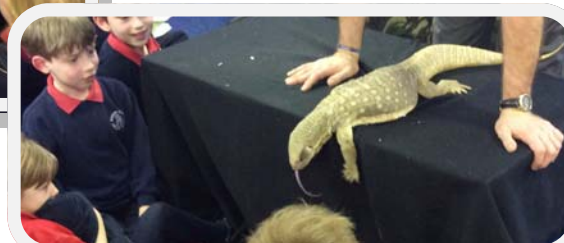
Do any parents have a garden gazebo that they no longer need? Chestnut class would like one to create a reading corner in their classroom. Also needed are good quality bean bags to go in the gazebo and any small world figures such as pirates, dolls, knights, mythical creatures etc.

We would also like to request donations of bikes/trikes, however please ensure that these are in good condition before donating for safety reasons. Thank you.

Reception children are taking a long time to choose their lunch meals so please could parents go through the options week by week so children are prepared. Menus are on the school website for the whole term and on the parent notice board under the waiting shelter to refer to. If your child is unsure what they want at register time, then they will default to a main meal.



### Year 2 Reptile visitors



### Parking

After quite a good spell with regards to parking, things are starting to deteriorate again. Thank you to the parents that are supporting the school by issuing 'parking tickets'. More are available from the school office if you would like to help.

Do not park in the turning circle or block driveways. Thank you.



### mSPORTi

Please see link below for holiday courses run by mSPORTi

<http://www.msport-online.co.uk/courses/holiday-courses/>



### BREAKING NEWS

**The netball team won against Langton Primary School on Thursday 8-0!  
Well done everyone!**